

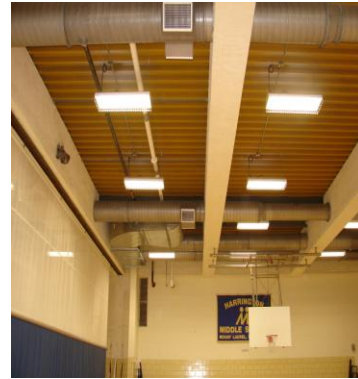


CASE STUDY

Mount Laurel School District

Mount Laurel, New Jersey

The Mount Laurel, NJ, School District contracted with GreenTech Energy Services to design and implement energy-savings solutions in seven elementary schools and one middle school. Outdated 400-watt metal halide fixtures in all gymnasiums and multi-purpose rooms were replaced with state-of-the-art T5 lighting. The new fixtures provide instant on and off, which eliminates warm-up time. They have also improved the overall aesthetics of the rooms and reduced energy consumption by 50%. Occupancy sensor controls were installed in all classrooms, which reduce energy consumption by automatically shutting off the lights when the classrooms are unoccupied.



THE SAVINGS

Total Program Costs	\$227,791
Total Utility Rebate	\$29,615
Total Payback Period	3.1
KW Saved	55
KWH Saved	387,543
Energy Savings	\$54,256
Operational Savings	\$9,112
Total Savings	\$63,368

ENVIRONMENTAL IMPACT

Reduction in Carbon Dioxide (pounds)	581,315
Reduction in Sulfur Dioxide (grams)	2,170,243
Reduction in Nitrogen Oxide (grams)	968,858

"GreenTech's service was excellent. If we needed anything, they responded immediately. The whole project was done without any interruption to the instructional day – they even worked around after school activities. It's obvious this company knows how to work with schools. And the results have been very positive. The rooms are so much brighter, it's literally like someone turned on the lights."

Robert F. Wachter, Assistant Superintendent for Business/ Board Secretary

GreenTech Energy Services, 122 East Kings Hwy, Ste 503, Maple Shade, NJ 08052

Phone: 800-690-0420 Fax: 856-778-1668 www.greentechenergy.com

©2007 GreenTech Energy Services, Inc.