



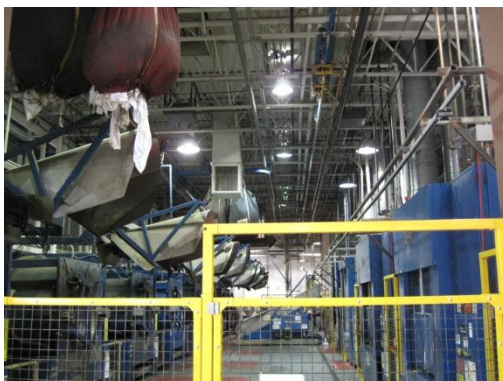
Lighting Upgrade Projects, Cintas Northeast Facilities

Reducing energy consumption and improving safety were among the goals that Cintas Corporation set for enhancing operations at its Northeast plants. Several plants were utilizing obsolete, energy-hungry technology. To address this, Cintas contracted with GreenTech Energy Services to design and implement lighting upgrades in its Long Island, Boston, and Branford, CT plants.

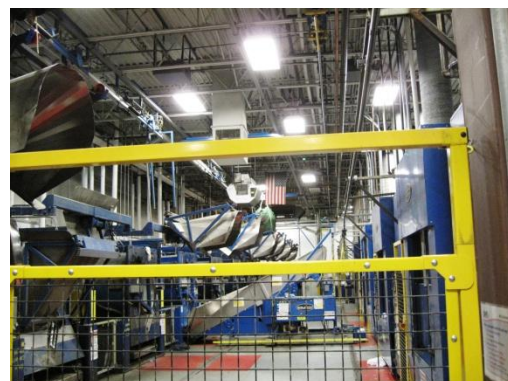
In production areas, existing 400-watt metal halide high bay fixtures were replaced with T8 fixtures with reflectors. In office areas, existing F32 T8 fixtures were retrofit with second generation 28-watt T8 lamps and low power electronic ballasts. In some areas, fixtures were added to the existing layout to enhance workspace lighting.

At each site, these measures not only cut energy consumption by at least half, but also raised the levels and quality of light in every area, enhancing the workers' productivity, comfort and safety. The newer lights also run cooler, which is important in a hot, humid work environment. None of these facilities have air conditioning during the summer, so this will aid in employee productivity and comfort.

Building Location	Program Cost	Utility Rebate	Energy Savings	Reduction in Carbon Dioxide (pounds)	Reduction in Sulfur Dioxide (grams)	Reduction in Nitrogen Oxide (grams)
Boston MA	\$51,667	\$13,425	\$29,141	259,027	967,036	431,712
Branford CT	\$43,099	\$0	\$13,191	197,870	738,716	329,784
Long Island NY	\$44,614	\$3,185	\$43,740	308,751	1,152,670	514,585
Port Washington, NY	\$23,690	\$11,960	\$16,988	141,565	528,509	235,941
TOTALS	\$163,070	\$28,570	\$103,060	907,213	3,386,931	1,512,022



BEFORE



AFTER

"All of the projects are producing significant energy savings as expected, which is key to helping stabilize our utility costs," says Doug Cosmini, Cintas Field Engineer. "But they've also made an amazing difference for our front line Partners who noticed the lighting improvement right away. They're very happy with the improved working conditions, and as a result they will be engaged, more productive, and - most importantly - safer."